

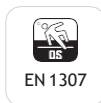
# CARESSE COUTURE

Technical specifications | Technische Daten | Spécifications techniques

|  |          |                       |  |             |                            |
|--|----------|-----------------------|--|-------------|----------------------------|
| Manufacturing technique<br>Herstellungstechnik<br>Technique de fabrication |          | 1/10 Cut-pile         | Number of tufts<br>Noppenzahl<br>Nombre de points  | ISO 1763    | 175.500/m <sup>2</sup>     |
| Pile composition<br>Material der Nutzschicht<br>Composition du velours     |          | 100% PA Luxus         | Minimum order quantity special colours<br>Mindestabnahme Sonderfarben<br>Quantité minimum couleurs spéciales |             | 500 m <sup>2</sup> /colour |
| Secondary backing<br>Rückenausstattung<br>Dossier                          |          | Weaveback             | Fastness to rubbing (dry)<br>Reibechtheit (trocken)<br>Solidité au frottement (sec)                          | ISO 105 X12 | 4-5                        |
| Width<br>Breite<br>Largeur   |          | 400/500 cm            | Fastness to rubbing (wet)<br>Reibechtheit (nass)<br>Solidité au frottement (humide)                          | ISO 105 X12 | 4-5                        |
| Roll length<br>Rollenlänge<br>Longueur du rouleau                          |          | 25 m                  | Water fastness<br>Wasserechtheit<br>Solidité à l'eau   | ISO 105 E01 | 4-5                        |
| Pile height<br>Polhöhe<br>Hauteur du velours                               | ISO 1766 | 9,4 mm                | Fastness to light<br>Lichtechtheit<br>Solidité à la lumière  | ISO 105 B2  | 5                          |
| Pile weight<br>Polgewicht<br>Poids du velours                              |          | 1615 g/m <sup>2</sup> | Thermal resistance<br>Wärmedurchlasswiderstand<br>Résistance thermique                                       | ISO 8302    | 0,17 m <sup>2</sup> K/W    |
| Total height<br>Gesamthöhe<br>Hauteur totale                               | ISO 1765 | 12,7 mm               | Impact sound insulation<br>Trittschalldämmung<br>Réduction de la transmission<br>du bruit de choc            | ISO 140 - 8 | 34 dB                      |
| Total weight<br>Gesamtgewicht<br>Poids total                               | ISO 8543 | 2320 g/m <sup>2</sup> | DOP Nr / DOP n°  |             | 1087#0422/15393/WI         |



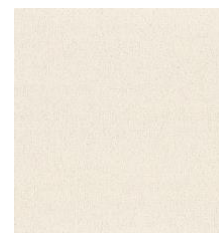
# DFGofesqp



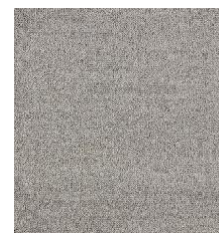
CARUS®

# CARESSE COUTURE

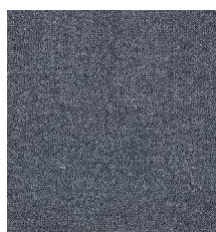
Colours | Farben | Couleurs



030



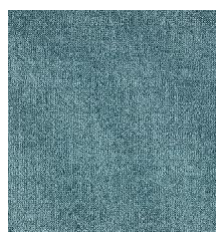
151



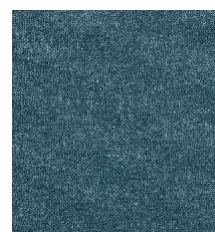
160



237



242



244



311



312



469



511



550



590



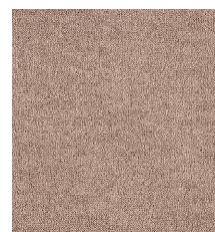
770



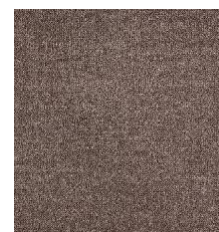
875



890



965



995

CARUS®